




Outbound Email Scanning with DoubleCheck

DoubleCheck has the ability to provide Spam, Virus, and Policy scanning on outbound email in the same fashion as it scans inbound email.

Configuring DoubleCheck for Outbound Mail

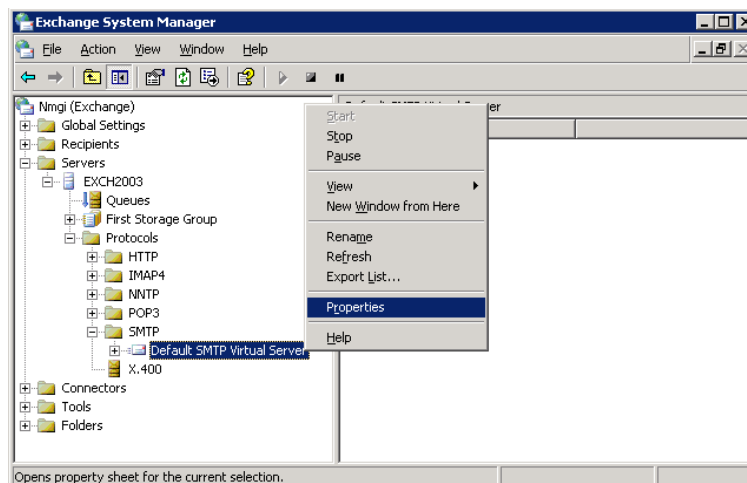
Before configuring anything on the mail server side, DoubleCheck needs to know to relay outbound mail from the mail server. To accomplish this, a new **Host Access Rule** must be created. Go to **SMTP -> Host Access Rules** and click **Add New Rule**. Enter in the IP Address of the email server, and set **Relaying On**. Other settings such as **RBL Check**, **DNS Check**, and **SPF Check** can all be disabled as well. **Outbound Spam** and **Policy checking** are optional, but **virus checking** is recommended on all email. Once those settings are configured, add the **Host Access Rule**.

  	Class C: 172.17.1. NMGI Exchange Server Smart host relay. Disable outbound spam protection.	Access: allow Relay: Yes Logging: On Sig: Default	RBL: Off DNS: Off SPF: Off	Spam: On Virus: On Policy: On Queue: On	Msg Size: Disabled Per-IP: Disabled Per-C: Disabled Max Load: Disabled
---	---	---	---	--	---

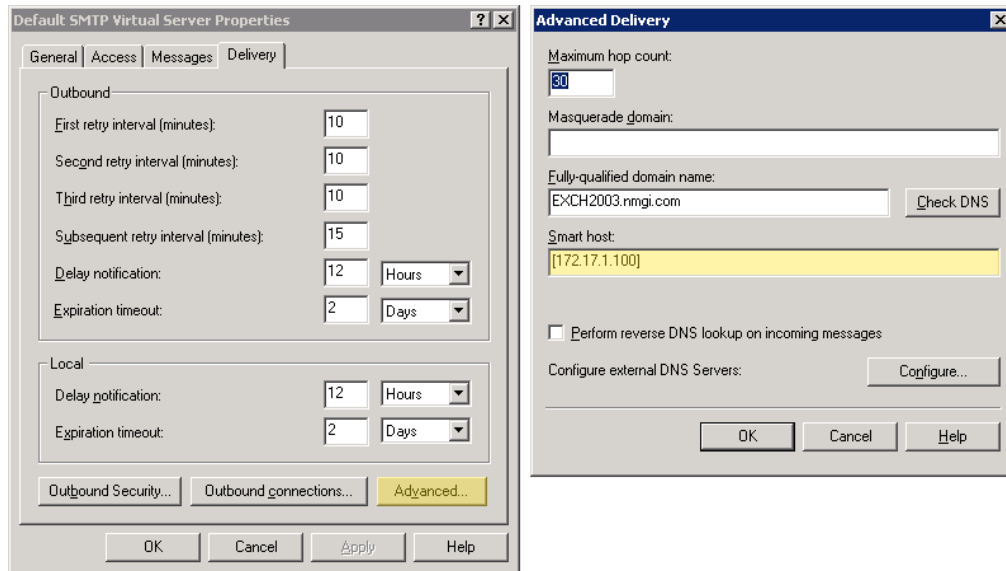
Microsoft Exchange

Before configuring Exchange settings, a **Host Access Rule** in DoubleCheck is needed to allow relaying from the IP address or network that the mail server sits on. For more information on adding a Host Access Rule, see **Configuring DoubleCheck for Outbound Mail** above.

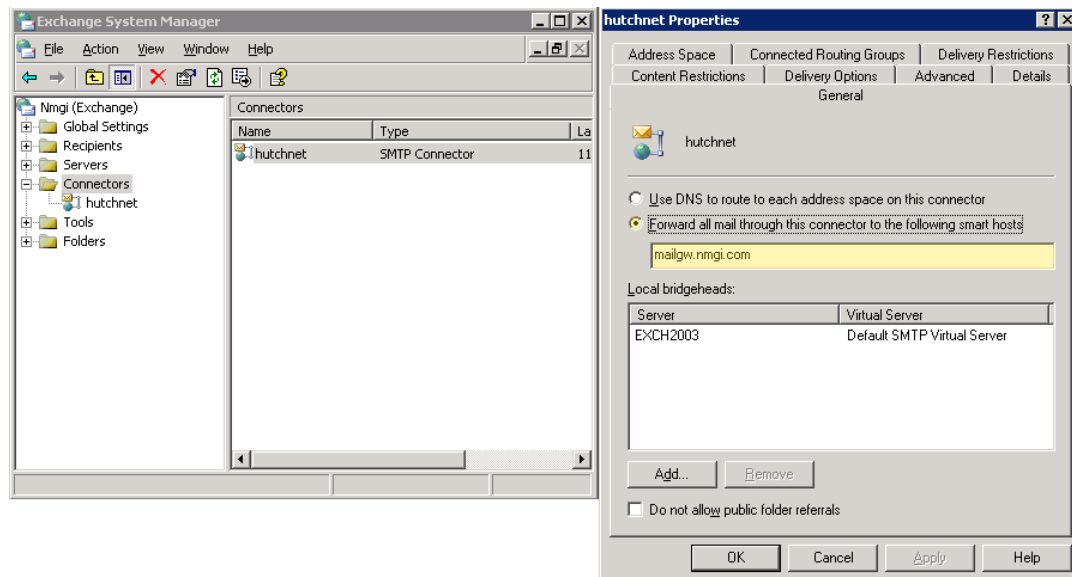
Microsoft Exchange has a couple mechanisms for configuring relay hosts. In Exchange they are referred to as **smart hosts**. In a basic Exchange setup for a single domain, you will normally find smart host configuration located under **System Manager -> Exchange -> Servers -> [SERVNAME] -> Protocols -> SMTP**.



Once there, **Default SMTP Virtual Server** will appear. Right click on **Default SMTP virtual server** and go to **properties**. Click the **Delivery** tab. Click **Advanced**. In the **Smart Host** section, enter the hostname, or IP address of DoubleCheck. When entering an IP address, you must enclose in square brackets (i.e. [172.17.1.100]).



If under the **System Manager -> Exchange -> Connectors** folder you have **SMTP Connectors** defined that send Internet bound email, you may need to configure those connectors to use the **"Forward to smart host"** setting instead of **"Use DNS to route"** in general connector settings.



Restart Exchange as necessary and send a test message. Verify the message went through DoubleCheck by looking at **Logs -> Email Log**.

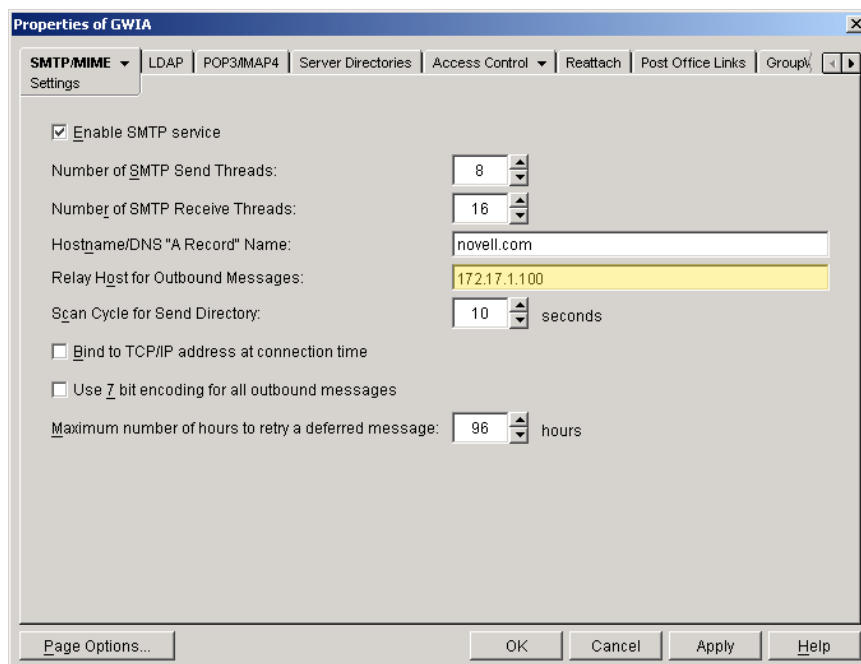
For more information on configuring Microsoft Exchange SMTP Connectors, see the following Knowledge Base Articles.

- <http://support.microsoft.com/default.aspx?scid=kb:en-us:265293>
- <http://support.microsoft.com/default.aspx?scid=kb:en-us:319426>

Novell GroupWise

Before configuring GroupWise settings, a **Host Access Rule** in DoubleCheck is needed to allow relaying from the IP address or network that the mail server sits on. For more information on adding a Host Access Rule, see **Configuring DoubleCheck for Outbound Mail** above.

Now, the **GWIA** will need to be configured to send using a relay host. This is done under the **SMTP/MIME Settings** in GroupWise 6.5. The setting is **Relay Host for Outbound Messages**.



The screenshot shows the 'Properties of GWIA' dialog box with the 'SMTP/MIME Settings' tab selected. The 'Relay Host for Outbound Messages' field is highlighted in yellow and contains the IP address '172.17.1.100'. Other settings include 'Enable SMTP service' checked, 'Number of SMTP Send Threads' set to 8, 'Number of SMTP Receive Threads' set to 16, 'Hostname/DNS "A Record" Name' set to 'novell.com', 'Scan Cycle for Send Directory' set to 10 seconds, and 'Maximum number of hours to retry a deferred message' set to 96 hours.

Restart GWIA as necessary and send a test message. Verify the message went through DoubleCheck by looking at **Logs -> Email Log**.

For more information on GWIA configuration, see

- http://www.novell.com/documentation/gw65/gw65_admin/data/a2zi22h.html#a37q7pp
- http://www.novell.com/documentation/gw65/gw65_admin/data/aig15tm.html#a378c8y



Other SMTP Servers

For other mail servers, the same rules apply. DoubleCheck must have a **SMTP Host Access Rule** defined to allow relaying from the mail server IP address, and you must configure a **relay host** or **smart host** on the mail server side. See **Configuring DoubleCheck for Outbound Mail** above for more information on configuring Host Access Rules. Please consult your mail server documentation for additional information.